



Secluded Year Round Luxury Glamping

Jan 2024 Vol 15



A Very Warm Welcome to Offa’s Pitch	6
<i>Access Statement.....</i>	<i>6</i>
<i>Keys</i>	<i>6</i>
<i>Getting here by Car.....</i>	<i>6</i>
<i>Getting here by Train</i>	<i>6</i>
<i>Wheelchair Users</i>	<i>7</i>
<i>Access Path</i>	<i>7</i>
<i>Internally.....</i>	<i>7</i>
Locality	8
<i>Shropshire the Original ‘Wild West’</i>	<i>8</i>
<i>Natural Surroundings.....</i>	<i>8</i>
<i>Walking, Cycling & Other Outdoor Activities</i>	<i>8</i>
<i>A Canopy of Stars</i>	<i>8</i>
What’s Included.....	9
<i>The Amenities.....</i>	<i>9</i>
<i>Apple iPad Pro</i>	<i>9</i>
<i>Outdoor Cooking & Camp Fire Bowl</i>	<i>10</i>
<i>Scandinavian Hot Tub.....</i>	<i>10</i>
<i>Safe Use</i>	<i>10</i>
<i>Operation</i>	<i>10</i>
<i>Eco Design.....</i>	<i>11</i>
<i>Waste Recycling and Disposal.....</i>	<i>11</i>
Our Cabin Nightly Rates	12
<i>Booking a Stay</i>	<i>12</i>
<i>Payment.....</i>	<i>12</i>
<i>Terms & Conditions.....</i>	<i>12</i>

<i>Coronavirus</i>	13
<i>Holiday Insurance Cover</i>	13
House Rules	14
More about Your Stay	15
<i>Telephone Signals</i>	15
<i>Emergency Lighting</i>	15
<i>Doors</i>	15
<i>Fly Screen Doors</i>	15
<i>Windows</i>	15
<i>Kitchen Appliances</i>	15
Fire Safety Notice	16
<i>Fire Action:</i>	16
Local Towns & Villages	17
<i>Clun - 3 miles</i>	17
<i>Bishops Castle - 5 miles</i>	17
<i>Montgomery, Powys - 10 miles</i>	17
<i>Church Stretton - 18 miles</i>	17
<i>Ludlow - 17 miles</i>	18
<i>Shrewsbury - 27 miles</i>	18
<i>Walks & Trails</i>	18
<i>Ancient & Historical</i>	18
<i>Clun Castle - 3 miles</i>	18
<i>Bury Ditches - 8 miles</i>	19
<i>Stokesay Castle - 13 miles</i>	19
<i>Powys Castle - 19 miles</i>	19
<i>Ludlow Castle - 18 miles</i>	19

<i>Wroxeter - 30 miles</i>	19
Pubs & Restaurants	20
<i>The White Horse Inn - Clun - 3 miles</i>	20
<i>The Castle Hotel - Bishops Castle - 6 miles</i>	20
<i>The Three Tuns - Bishops Castle - 6 miles</i>	20
<i>The Lion Inn - Leintwardine - 10 miles</i>	20
<i>The Baron - Bucknell - 10 miles</i>	20
Attractions	21
<i>Acton Scott Historic Working Farm nr Church Stretton - 16 miles</i>	21
<i>The Judges Quarters Presteigne - 17 miles</i>	21
<i>Kerry Vale Vineyard Pentreheyling - 8 miles</i>	21
<i>Ironbridge Gorge and Industrial Museum - 35 miles</i>	21
<i>The Severn Valley Railway Kidderminster - 40 miles</i>	21
<i>The Welshpool and Llanfair Heritage Light Railway 19 - miles</i>	21
<i>The Spaceguard Centre Knighton - 10 miles</i>	22
<i>West Midland Safari Park Bewdley - 39 miles</i>	22
<i>Visiting Wales</i>	22
<i>Aberdyfi - Aberdovey</i>	22
<i>Aberystwyth</i>	22
<i>Snowdonia 1hr 45mins</i>	22
<i>Brecon Beacons 1hr 45 mins</i>	22
How to get Here	23
<i>Directions traveling South from Shrewsbury By-Pass</i>	23
<i>Directions traveling East along the A483</i>	23

Directions traveling North from the A4924
Directions traveling West on the A45624
Contact Us:25

A Very Warm Welcome to Offa's Pitch

'Offa's Pitch is a uniquely designed oak framed vacation property based in the hamlet of Mardu in the South of Shropshire. This luxury self catering cabin has full underfloor heating and aimed mainly at couples seeking a secluded hideaway or, a base from which to explore what is a designated 'Area of Outstanding Natural Beauty'. Here in a small valley overlooked by open hillside fields and woodland copses the site is accessed by narrow single track lanes. Offa's Pitch sits on its own in a small paddock about an acre in size with a stream at the southern boundary. Here you can totally immerse yourselves in our genuinely peaceful and remote location.

Access Statement

Our access statement is designed to help you enjoy staying with us in as safe a way as possible. The information provided here is reviewed regularly and if you have any questions that you wish to ask us or comments that you think will help us to improve our statement please contact us at info@offaspitch.co.uk or telephone us on 07747 443322.

Keys

Available from owners Philip & Avril Wright at Mardu Cottage, Mardu Lane, just ring the bell.

Getting here by Car

Offa's Pitch sits on its own in a small paddock of about an acre opposite Mardu Cottage in the secluded hamlet of Mardu Shropshire an area noted for its hills. Mardu is accessed along some very narrow lanes and whilst generally there is very little traffic you may find that sometimes you will have to pull over or even reverse back to somewhere to allow another car or farm vehicle to pass you. On arrival you will find Offa's Pitch has its own private parking space immediately adjacent to the lane.

Getting here by Train

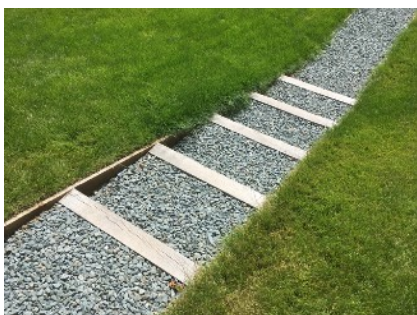
The nearest train station is Craven Arms served by ARRIVA TRAINS WALES. Journey time to and from the station is approximately 25 mins and there are a number of taxi firms that operate locally information about them is available online.

Wheelchair Users

We deeply regret that, the site topography and some features of the building itself means permanent wheelchair users will have great difficulty accessing the site. Wheelchair users that have some independent mobility however should, with some assistance be able to access all of the facilities. Please note that for safety, people with mobility restrictions should have a fully mobile carer with them at all times when staying at Offa's Pitch. If you, or the person you represent has an impairment or difficulties of any kind and you wish to stay at Offa's Pitch please contact us at info@offaspitch.co.uk or telephone us on 07747 443322 prior to confirming your booking to discuss your needs, we will do our utmost to accommodate you.

Access Path

The access path into Offa's Pitch itself is through a gate in the private parking lay-by. This leads to a narrow gravel path that drops down forming nine steps. At night this path is lit by PIR activated lights as is the entrance area.



Internally

Apart from the en-suite bathroom Offa's Pitch is entirely open plan. Also, aside from a very low door threshold it is on one level. The main front doors lead straight into a lounge area with a small dining area to the left. Further to the left is the kitchen and this leads through to another set of double doors and directly onto the external sundeck. From the sundeck there is a step down onto the grass. Turning right as you enter takes you to the bedroom area and through to the en-suite bathroom. Offa's Pitch is a unique structure designed to simulate a large tent on the ground. Because internally its oak frame is exposed and the timbers are acutely angled this may cause problems for people with limited vision. Regrettably, some gangways are not wide enough to accommodate a wheelchair. For further information on this please read our 'Access Statement'.

Locality

Shropshire the Original 'Wild West'

Offa's Pitch is completely surrounded by hills and ancient woodlands that overlook lush green valleys of pastureland cleft by small rivers and brooks. Even the seemingly never ending daily hard work of sheep farming is largely offset by peace and tranquility of the scenery. From Roman times this part of Shropshire has been referred to as the 'remotest part of England'. Here the borders with Wales have ebbed and flowed over the centuries and many of it's towns and villages have been fought over, claimed and ruled by both countries resulting in a abundance of Castles and Fortified Houses in the locality and a dialect that has within it a distinctive Welsh lilt.

Natural Surroundings

Here at Offa's Pitch there is little through traffic and the wildlife remains relatively undisturbed. With some forethought, the opportunity to see nervous creatures such as Fallow and Roe deer particularly around nearby Blakeridge Wood is much higher than the average. Buzzards are a common sight in the skies above and mixed flocks of Redpolls and Linnets are seen regularly around the farmlands in late autumn and winter. At the bird feeders you'll always find nuthatches, woodpeckers, Blue, Great, Long Tailed and Marsh Tits. Various species of owls also inhabit the locality and you'll often hear them from early evening and late into the night. If you're visiting in September or October you may well get a chance to see badgers digging up the grass, looking for crane-fly grubs.

Walking, Cycling & Other Outdoor Activities

Offa's Pitch is in one of many similar enclosures that are divided by hedgerows in this secluded part of the beautiful Clun Valley. Here there are many trails to walk and routes to cycle - Offa's Pitch is only 200m from Offa's Dyke path, a ten minute walk from the 'Shropshire Way' and the 'Kerry Ridgeway' is only a short distance away too and not forgetting Carding Mill Valley access to The Long Mynd. Nearby Bishops Castle forms a part of the National Cycle Network and the lanes above Offa's Pitch provide stunning panoramic views over the Welsh Borders.

A Canopy of Stars

With no street lighting for miles around on a moonless night you'll struggle to see your hand in front of your face. All our external lighting is PIR activated and on short timings to keep lighting levels to an absolute minimum. This level of darkness means that on cloudless nights there is a really great opportunity to do some stargazing.

What's Included

In the kitchen you'll find all the self catering basics tea, coffee, milk, sugar, as well as olive oil and condiments. We are happy to receive or get food supplies ready for your arrival so please let us know in advance if there is anything you require.

The Amenities

Private Car parking

Underfloor Heating

Independent Free Wi-Fi

Fan Oven

Lavazza Coffee Machine

Induction Hob

Refrigerator with freezer compartment

Dishwasher

Shower room (no bath)

Towels and bed linen

Midweek Towel Change (for those staying 4 nights or more)

Hairdryer

12" iPad Pro (please see notes below)

Bang & Olufsen Bluetooth Speaker

Mood Lighting

Sundeck & Hanging Egg Chairs

Secure Cycle Storage

Also available for Hire: Wood Burning Hot Tub, Kadai Fire Bowl and eBikes (see below for details)

Apple iPad Pro

We are delighted to provide you with an iPad Pro for your entertainment and to allow you to access information on the web. We hope that you will enjoy using it to find out more about Shropshire and our locality especially. Offa's Pitch, with its own direct internet connection will allow you to quickly find out where you might like to visit or eat out for example. We want to ensure that your stay is as good as it can be. Polite Note: To enable us to conform to our insurance policy requirements, please ensure the iPad Pro remains at Offa's Pitch - Thank You.

Outdoor Cooking & Camp Fire Bowl

If you like cooking outdoors we have a Kadai Fire Bowl available for you to hire for £25 which includes two bags of charcoal, a large tub of kiln dried logs and, of course the cleaning. You can enjoy cooking your meal in this traditional way using charcoal or logs and then build the fire up into the evening with larger logs and enjoy relaxing around the fire. After using it for cooking, we do ask that you please clean the BBQ utensils using the washing bowl provided, thank you.

Scandinavian Hot Tub

We have a Scandinavian Wood Burning Hot Tub for you to enjoy. You can totally relax in this during your visit - under the stars if you desire. Hot Tub rate with all the kindling and kiln dried logs you'll need for your stay is: 2 nights £70.00, 3/5 nights £80.00. Just ask us and we'll have it fired up ready for your arrival saving you time on your first night.

Safe Use

To ensure safe use guests must read this literature thoroughly before using the Hot Tub.

Hot Tubs are generally regarded as safe to use by adults and indeed offer many health benefits however, it is not advisable to use the Hot Tub if you have or suspect that you have a heart condition, suffer from dizzy spells or if you are pregnant. Assuming that you are fit, if whilst using the Hot Tub you experience headaches or dizziness this indicates you have probably spent too much time in the water and you could be dehydrating. It is therefore very important to keep hydrated by drinking plenty of water when soaking. Normally, we will have the Hot Tub up to temperature for when you arrive. Thereafter, we leave maintaining the water temperature by use of the wood burner to you. Please remember that the wood burning stove is VERY HOT, use the gloves provided and take great care when opening and closing the stove door. Kindling and logs for the wood burner are kept in the shed. There is a cold water tap and hose next to the Hot Tub if you find that you need to reduce the water temperature. As with any spa or swimming pool it is recommended you shower before use. Only plastic glasses and tumblers are to be used in the Hot Tub and please remember that drinking alcohol when relaxing in a hot tub is considered a bad idea as both will contribute to dehydration. Keep hydrated by drinking water. To help maintain the water temperature please replace the lids when you've finished your session. Remember to quickly dry off before entering Offa's Pitch as the wooden floor can become slippery when wet.

Operation

Our wood fired hot tub was made in Norway and uses conventional logs to heat the water. We want you to enjoy using it and supply you with sufficient fuel for you to have a good session and more for each day of your stay. Build a fire like you would in a fireplace or other wood stove using only split logs. Plug in the electronic fire lighter (see instruction sheet in cabin) and place 3-5cms from the centre of the logs and leave for a few mins to light the fire. Once the fire is going close

the stove door with the vent open to provide maximum draft. Heating times vary of course but expect the water to be up to temperature within 1.5 hours or sooner. Controlling the temperature simply check the temperature of the water from time to time using the floating thermometer and give the water a stir using the paddle. Depending upon the season the water temperature should be between 37 deg C and 39 deg C. When in use, the water temperature in a hot tub should not exceed 40 deg C. Add more fuel to increase the water temperature and if you overshoot the temperature set on the floating thermometer the temperature shown flashes a red light. However no need to panic, just add some cold water to the tub from the adjacent outside tap and hose. Our hot tub is ecologically friendly and does not use any chemicals. It is simple to use but if you do find that you need some help please just ask us.

Sustainability

Eco Design

Offa's Pitch was designed by us to be eco friendly. All of the prime building materials are either reclaimed or from certified sustainable sources and with good design we have met stringent planning and ecological requirements resulting in a structure of the highest sustainable quality. Our oak frame used 95% recycled timber under a pitched steel roof. The steel supplier TATA is the first steel company to secure BES 6001 Responsible Sourcing Certification for this type of product and the steel used is made with 25% of recycled product and is itself 100% recyclable. This steel roof system is rated A+ in the BRE Green Guide. Offa's Pitch has a normal flushing toilet and shower that uses the latest waste management technology. This results in extremely clean outflow with 98.9% pollution reduction and the lowest power usage of any current treatment plant. Our kitchen garden sited not far from the cabin provides the opportunity for guests to enjoy some seasonable fruits and vegetables. Just ask us and we'll let you know what is available. All of the wood for the hot tub is locally sourced to produce 'the least travelled log. All of the waste wood and sawdust is used to fuel the boiler that runs their kiln.

Waste Recycling and Disposal

Please use the bins accordingly

No food to be left in the refrigerator please.

- Grey bin under the kitchen sink - for food waste only.
- Grey bins with stainless tops under the kitchen sink and bathroom - general waste that cannot be recycled.
- Black labeled box in the shed - Glass, plastic bottles, paper and cardboard.
- There is a household dustbin at the rear, please drop your waste bags in there and we'll do the rest.

Our Cabin Nightly Rates

For 2024 guests are invited to stay at Offa's Pitch for a minimum of 2 nights. The cost of a stay is £220.00 per night. Christmas, New Year & Bank Holidays are priced separately please contact us. Arriving after 5.00 pm and departing between 9:30 and 10:00 am on the leaving day. We can sometimes accommodate you earlier and will definitely text you to let you know if that's possible.

Booking a Stay

Please complete the online booking form with your full details or contact us at info@offaspitch.co.uk. We will then check the availability as soon as possible and if free confirm this to you. Having confirmed the availability to you the booking is secured upon receipt of the 30% deposit or the amount in full if the date of the booking is within 10 weeks. When booking it is important that you inform us of any special needs that you or your partner may have.

Payment

Payments are by bank transfer please contact us by email or telephone for our bank details. Any balance payable is due 10 weeks before your arrival date. If your booking is made within 10 weeks of your planned stay with us full payment is required.

Terms & Conditions

If you have to cancel a booking.

Once your booking is confirmed if you find that for any reason you need to cancel your stay with us please confirm this to us as soon as possible in writing preferably by email to info@offaspitch.co.uk. Cancellation by you at any time will result in your deposit being forfeited, as all deposits are non-refundable. All monies paid for a holiday (deposit and balance) are non-refundable within 10 weeks of your check-in date. Cancellation of any holiday after it has been paid in full that is 10 weeks or more ahead of your check in date, will result in forfeiture of your deposit (or an amount equivalent where one was not paid as the holiday was paid in full) and the balance refunded to you. If you are prevented from reaching your holiday, taking or finishing your holiday for whatever reason, you are still subject to our cancellation terms and no refund will be offered. Reasons for having to cancel usually come out of the blue and to protect yourself against any costs incurred and money lost due to having to cancel however caused, we very strongly recommend that you take out separate travel insurance that covers these possibilities, accidental damage to equipment/furnishings and Covid.

If we have to cancel a booking.

If we for any reason have to cancel your booking we cannot accept any liability or costs arising from any such cancellation. If such a cancellation occurs within 10 weeks of your check in we will look to agree an alternative holiday date with you however, if we are unable to agree to an alternative date for your stay we will refund the amount received from you less the deposit amount (30% of the cost) by BACS transfer. Where the cancellation is more than 10 weeks ahead we will look to agree an alternative holiday date with you however, if we are unable to agree to an alternative date for your stay we will refund the amount you've paid in full. To protect yourself against any costs incurred and money lost due to cancellation however caused we strongly recommend that you take out separate travel insurance that covers these possibilities and includes Covid cover.

Coronavirus

Terms & Conditions Relating to Coronavirus Covid-19

We are all now fully aware of the disruption that is caused by testing positive to Covid and so we strongly advise you to take out Travel Insurance that includes Covid cover. Should your holiday dates be affected by being unable to travel due to Covid self isolation rules for example, our terms and conditions above will apply.

Holiday Insurance Cover

Reasons for having to cancel usually come out of the blue and to protect yourself against any costs incurred and money lost due to having to cancel however caused, we strongly recommend that you take out separate travel insurance that covers these possibilities. Also, accidents can happen to anyone and so we also strongly recommend this cover includes, accidental damage to equipment and furnishings.

House Rules

The following are very important to us and we thank you for observing them.

- * Unless otherwise stated, the departure time on your leaving day is 09.30 am. Please keep to this as reasonably as you can. We dislike having to keep you to a strict leaving time but we're sure you understand.
- * We very much want you to enjoy yourselves here but please remember even low levels of noise will carry a very long way down the valley particularly, during the evenings and at night. Please respect this special environment and keep noise levels to an **absolute minimum** especially if listening to music outside or, whilst enjoying the Hot Tub. Thank you.
- * Absolutely NO smoking or vaping in the cabin. Please smoke outside away from the decking and extinguish all cigarettes in the container provided where we can find and dispose of them.
- * NO candles or any other naked flames inside the cabin.
- * Please **DO NOT** dispose of anything other than toilet paper down the loo, our treatment plant absolutely relies upon this :)
- * When using the oven please use the roasting bags provided in the drawer. Oven cleaning takes up a great deal of the time available to us and if we have to remove excessive oil and grease splatter we will have to charge you.
- * Please remove all food from the refrigerator before leaving, thank you.
- * The heating system is permanently set for your comfort please do not adjust the thermostats, we'll be very happy to do that for you if you need the heating either raised or lowered.
- * Please turn OFF all lights when not in use. The locality is noted for its 'Dark Skies' and it is an Ecology Planning Condition that we minimise lighting at night.
- * Please do not wear wet or muddy shoes or boots inside as the floor can be slippery when wet.
- * Normal wear and tear apart, losses or damage to the cabin or its contents caused by you or your invited guests must be paid for. For your comfort and delight our cabins are kitted out with some exclusive (and expensive) items and furnishings. Anyone can have an accident, which is why, for peace of mind we strongly urge you to take out holiday insurance that will cover you for any breakages or damage. Please advise us of all breakages and spillages, particularly on bedding before you leave.

Certainly not a House Rule but, our loveable cat 'Elkie' is very friendly and will likely come round to visit. She is almost completely blind and to get around relies mostly upon her amazing hearing. Please enjoy her company if you wish but we wouldn't want her to become a nuisance. If she is with you late on in the evening please send her out by about 9.00pm or, better still pop her on our drive as she sometimes cannot find her way home at night particularly in bad weather and has become lost on several occasions.

Thank you, Philip & Avril.

More about Your Stay

Telephone Signals

Inside Offa's Pitch our wi-fi router will enable you to have a good phone signal. Outside phone signals are limited from some networks.

Emergency Lighting

In the unlikely event of a power loss there is a torch provided in Offa's Pitch.

Doors

The French doors are locked by lifting the handle up and as far left as they will go the key should then turn in the lock.

Fly Screen Doors

Offa's Pitch is deep in the countryside surrounded by pastureland and because of this you can expect flies and other flying insects especially on sunny days. These can be a nuisance inside and so we have installed bespoke Fly Screen Doors. To use them open the French doors in the kitchen and keep them open using the stone 'Moon Gazing Hare' doorstops. The fly screens can then be pulled across and will magnetically 'lock' in the middle. It's then a simple matter to open them and step through as you wish closing them behind you keeping the bugs where they belong.

Windows

There are two Velux windows. The one in the kitchen is hinged in the middle. The bedroom one however, will open fully from the top and when pushed out into this position is an alternative means of escape in case of a fire. We have sun and blackout blinds on the windows but not fly screens so, for ventilation when there are a lot of insects about we advise keeping them closed and relying on the double fly screen kitchen doors for full ventilation.

Kitchen Appliances

The 'How to Use and Quick Start Guides' are kept in the Offa's Pitch Handbook stored in the sideboard.

Fire Safety Notice

Fire Action:

If a **FIRE** is discovered:

- Raise the alarm as soon as possible.
- Attacking the fire with the Fire Blanket or extinguisher should **ONLY** be attempted if it is a very small fire and safe to do so.
- Leave the building immediately by the nearest exit and assemble outside on the parking lay by.
- Contact the the fire brigade as soon as possible.
- Contact Philip or Avril Wright.

Fire Information:

The kitchen is fitted with a mains wired heat alarm and there is a micro smoke alarm in the lounge area. There is a fire extinguisher in the lounge and a fire blanket in the kitchen cupboard adjacent to the sink.

If you hear the heat or smoke alarm:

- Leave the building immediately by the nearest exit and assemble outside on the parking lay-by.
- Contact the fire brigade asap.
- Contact Philip or Avril Wright.

In either case:

- **Do not wait to collect personal belongings.**
- **Do not return to the cabin until you've been told it is safe to do so by the Senior Fire Person in Charge.**

OP FRA notice 03-rev 9 Jan 2024.

Local Towns & Villages

(For local places to eat and drink also see 'Pubs and Restaurants' for more information).

Clun - 3 miles

Set in the heart of the Clun Valley an area of Outstanding Natural Beauty with the River Clun itself an SSSI running through it. Visit the Castle ruins for a taste of what medieval Clun was like. Today, you'll find several small independent shops including a supermarket and post office. butchers, hairdressers, lively pubs, cafes, restaurants, books and gift shops. Bring your boots and you can join one of the several groups that organise weekly guided walks around the locality. During May thousands descend on the town as it stages its famous 'Green Man' Festival.

Bishops Castle - 5 miles

Interesting range of small shops including cafe's, hand made furniture, arts and craft, books, ceramics and antiques. There are three small supermarkets, a pharmacy, HSBC bank and post office. There is also a doctor's surgery and several beauty salons. You'll also find a large sports centre with an indoor swimming pool and cinema. Local produce and craft markets take place regularly in the Town Hall. It has two micro breweries open to the public one of which established in 1642 is the oldest in Britain. The music scene is vibrant and people come from far and wide to sample the real ale brewed here. There are many fetes and festivals held here throughout the year.

Montgomery, Powys - 10 miles

Lovely small Georgian town with an excellent 13th C ruined Castle that has fantastic views over the surrounding valley. There are a number of small independent shops in and around the market square including ladies and menswear, antiques, cafes, small supermarket, pubs and restaurants. Here you can access the Montgomery canal which is 35 miles in length and passes through some of the most picturesque scenery in Britain. Short day trips and boat hire are available.

Church Stretton - 18 miles

Nicknamed 'Little Switzerland' Church Stretton is an historic Market Town situated in the heart of the South Shropshire hills on the English/Welsh border known as The Marches. It has a charming array of small independent shops set amid beautiful countryside, with its wild uplands and breathtaking views. The Long Mynd rising above the west of the town is celebrated for walking, cycling, gliding, hang gliding and paragliding and is further renowned worldwide for its geology, with some of the oldest rock formations in existence.

Ludlow - 17 miles

With its early Norman Castle, riverside, racecourse and more listed buildings than any other town in Britain Ludlow is the quintessential small English town. There is an excellent varied selection of small independent shops in the town and it is internationally known as a foodie hot spot boasting many good restaurants, some with Michelin stars. For a quick bite to eat try Vaughans in King Street which reputedly sells the tastiest sausage bap or hot pork sandwich anywhere in the UK! How many 5 star rated sandwich shops do you know?

Shrewsbury - 27 miles

The County Town of Shropshire. A mid-sized modern shopping centre amongst the many independent traders in the much older buildings in and around Wyle Cop gives Shrewsbury its eclectic mix. The River Severn winds its way around in a horseshoe through the very centre of the town and makes for a lovely walk along the banks or, take a short boat trip and enjoy the views. The Birthplace of Charles Darwin Mount House can also be found along the river bank. It has a museum in the centre which is well worth a visit and features amongst many other exhibits an interesting Roman section. Out of the centre you will find most of the stores that you would expect to find in a town of this size.

Walks & Trails

If you're visiting midweek there are a number of groups from whom you'll receive a warm welcome to join them as they set off from Clun on guided walks around the locality. Maps to all of the following are also available for you at Offa's Pitch.

Offa's Dyke

Shropshire Way

Kerry Ridgeway

Ancient & Historical

From Iron Age hill forts to romantic medieval manors and castles. Shropshire and The Marches has an abundance of ancient and historical sites.

Clun Castle - 3 miles

A 13th century keep is set on the side of its mound. Founded shortly after the Norman Conquest, the castle and nearby settlement prospered until the early 15th century, when followers of the Welsh chieftain Owain Glyndwr devastated the surrounding area.

Bury Ditches - 8 miles

One of the best-preserved hill forts in Britain, dating from about 500BC.

Stokesay Castle - 13 miles

Step into the finest and best-preserved fortified medieval manor house in England. Discover the great hall, unchanged for over 700 years. Spot characters carved in the timbers of the 17th-century gatehouse and climb to the top of a fairy-tale tower for breath-taking views of the Shropshire Hills. Stokesay Castle was constructed at the end of the 13th century by Laurence of Ludlow, who at the time was one of the richest men in England. It remains a treasure by-passed by time, one of the best places to visit in England to experience what medieval life was like. The tea rooms are recommended.

Powys Castle - 19 miles

Medieval castle rising dramatically above the world-famous garden, overhung with clipped yews, shelters rare and tender plants. Laid out under the influence of Italian and French styles, it retains its original lead statues and an orangery on the terraces. High on a rock above the terraces, the castle, originally built *circa* 1200, began life as a medieval fortress. It has panoramic views over the surrounding valley.

Ludlow Castle - 18 miles

It is one of the most interesting castles in the Marches, in a dominant and imposing position high above the River Teme. It features examples of architecture from the Norman, Medieval and Tudor periods. The building of the castle led to the development of Ludlow itself, at first grouped around the castle; the impressive ruins of the castle occupy the oldest part of Ludlow.

Wroxeter - 30 miles

Nr Shrewsbury see the fascinating remains of a Roman City and be amazed at what took place there then visit the attached Roman Museum. Well worth a visit followed perhaps by a very nice lunch at the farm restaurant in Battle 1403 a 15 minute drive away.

Pubs & Restaurants

The White Horse Inn - Clun - 3 miles

A real ale pub in the centre of picturesque Clun with its own micro brewery and serving good locally sourced food daily. Booking not essential but it does get busy. A lively venue and one of the hosts of the Clun Valley Beer Festival usually held in September.

The Castle Hotel - Bishops Castle - 6 miles

Highly regarded with a good menu, very friendly staff and beautiful south facing gardens with seating to enjoy an al fresco meal and drinks.

The Three Tuns - Bishops Castle - 6 miles

Very good pub menu and excellent beer brewed next door in their brewery, the oldest in Britain (visits can be arranged).

The Lion Inn - Leintwardine - 10 miles

Reliable, for great food and service in a lovely riverside setting.

The Baron - Bucknell - 10 miles

Excellent pub food in a picturesque valley setting.

There are several take-aways locally and menus are available for you at Offa's Pitch.

We recommend telephoning to book in advance when looking to eat at any of the above.

Attractions

Acton Scott Historic Working Farm nr Church Stretton - 16 miles

Today, this Historic Working Farm offers a fascinating insight into rural life at the turn of the 19th century, as farm life unfolds daily and the land around is worked by heavy horses. There are daily demonstrations of period skills and visits from the Wheelwright, Farrier and Blacksmith, providing a picture of life as it might have been on a Victorian country estate.

The Judges Quarters Presteigne - 17 miles

From the stunningly restored judge's apartments to the dingy servants' quarters below you can explore their gaslit world. Damp cells remind you of the building's true purpose, along with the vast courtroom where your imagination is captured by the echoing trial of William Morgan, local duck thief. Dress up and take part in the drama!

Kerry Vale Vineyard Pentreheyling - 8 miles

Kerry Vale Vineyard is a small, family run, English vineyard situated on the Welsh/English border of rural Shropshire. Planted in 2010 and covering six acres of farmland, on what was the Roman Fort of Pentreheyling, the vineyard resides at the eastern tip of the Vale of Kerry, an area of exceptional beauty just 3 miles south of the charming town of Montgomery. Wine tasting is highly recommended, especially their Shropshire Lady which is a Gold Award winning wine.

Ironbridge Gorge and Industrial Museum - 35 miles

A World Heritage site. A simply amazing day out!

The Severn Valley Railway Kidderminster - 40 miles

A wonderful 16 mile long Heritage track that runs through some of the most scenic countryside in Britain.

The Welshpool and Llanfair Heritage Light Railway 19 - miles

8.5 miles long and runs through some of the most beautiful parts of Mid Wales.

The Spaceguard Centre Knighton - 10 miles

Is a charity based observatory established in a dark sky area that scans space for near earth objects (NEO's). Conducted tours of approx 1.5 hrs Weds - Sun please check the website for times. Visits can be also be arranged during evenings and can last longer if the skies are clear.

West Midland Safari Park Bewdley - 39 miles

Unusually for Safari Parks you're actually encouraged to feed the animals in their spacious enclosures. Serious conservation lies behind great fun feeding a Giraffe or a Zebra!

Visiting Wales

The Welsh border is only 5 miles away and if you come by car and don't mind a drive, it is perfectly possible to visit some of the best attractions in Wales for a day out. Journey times to the coast are about 1.5 hours and to Snowdonia 2 hours. You'll find the traffic en route generally very light with some of the most beautiful and dramatic scenery that Britain has to offer. The following are a few of those that we've visited ourselves from home in a day.

Aberdyfi - Aberdovey

A very picturesque coastal harbour village with a nice sandy beach and seemingly slow pace of life. Good selection of welcoming independent shops, cafes, pubs, restaurants and hotels. Take a walk up along the footpath overlooking the town on a sunny day the views over the estuarine bay are absolutely wonderful!. N.B. There are miles of sandy beach but swimmers should be cautious around the estuary mouth where there are strong currents.

Aberystwyth

A lively holiday resort and also the administrative centre for the west coast of Wales. The town nestles between three hills and two beaches, and hosts some castle ruins, a pier and a harbour. It also has the longest cliff railway in Britain. The surrounding hills hold the visible remains of an iron age fort and also a monument to Wellington and once climbed offer stunning views of Cardigan Bay. The National Library of Wales is also centred here.

Snowdonia 1hr 45mins

Although further afield its a really lovely drive from here through the valleys of Mid Wales to some of the most dramatic mountainous scenery Britain has to offer. Once there you can decide to either walk or take the famous train ride to the top of Mount Snowdon, breathtaking scenery.

Brecon Beacons 1hr 45 mins

Outstanding scenery with mountains, forests, waterfalls, dark skies the Beacons have it all.

How to get Here

Directions traveling South from Shrewsbury By-Pass

Take the A49 south towards Leominster, Ludlow and Church Stretton. Go through Church Stretton and on to Craven Arms where after passing Tuffins Supermarket you turn right onto the B4368 at the O signed to Clun. Carry straight on through Aston on Clun and Clunton until you reach Clun. In Clun at the T junction turn left down the hill towards and over the bridge. Turn right immediately after crossing the bridge towards Newcastle. After about 2 miles turn right where its signed Whitcott Keysett and Mardu. You are now on a single track lane. At the T junction turn left and after 150m turn right in Whitcott Keysett where there is a house in the middle of the small junction. Carry straight on passing the old chapel on your right. After 1 mile you'll come to Mardu Farm on either side of the lane where there is a right turn and a white cottage on the corner in front of you. Look for our Offa's Pitch Glamping direction sign on the signpost and after a further 150m the lane drops down a little where the brook goes under the road. Turn immediately right and after 30m right again and Offa's Pitch parking space is on your right and you have arrived.

N.B. If your Sat Nav takes you via Bishops Castle turn right off the A488 at Colebatch towards Cefn Einion. This is a narrow winding lane that will take you through the hamlet of Cefn Einion, keep going straight on at each junction even where it is staggered. Eventually you'll come down a narrow hill into the hamlet of Mardu do not turn left at the bottom but look for our direction sign on the signpost. Offa's Pitch parking space is 200m on the left and you have arrived.

Directions traveling East along the A483

In Newtown at the junction with the A489 turn right towards Ceri (Kerry). After passing through Kerry turn right along the B4368 signed towards Clun. This road is quite steep and winds a lot in places and will take you up to the hamlet of Anchor and on to the village of Newcastle. Through Newcastle towards Clun turn left at the sign for Whitcott Keysett and Mardu. You are now on a single track lane. At the T junction turn left and after 150m turn right in Whitcott Keysett where there is a house in the middle of the small junction. Carry straight on passing the old chapel on your right. After 1 mile you'll come to Mardu Farm on either side of the lane where there is a right turn and a white cottage on the corner in front of you. Look for our Offa's Pitch Glamping sign on the signpost after 150m the lane drops down a little where the brook goes under the road. Turn immediately right and after 30m right again and Offa's Pitch parking space is on your right and you have arrived.

Directions traveling North from the A49

After passing through Hereford and Leominster head towards Craven Arms. As you come into Craven Arms look out for the Shropshire Hills Discovery Centre on your right and then turn left at the O on the B4368 towards Clun. Carry straight on through Aston Clun and Clunton until you reach Clun. In Clun at the T junction turn left down the hill towards and over the bridge.

Turn right immediately after crossing the bridge towards Newcastle. After about 2 miles turn right where it's signed Whitcott Keysett and Mardu. You are now on a single track lane. At the T junction turn left and after 150m turn right in Whitcott Keysett where there is a house in the middle of the small junction. Carry straight on passing the old chapel on your right. After 1 mile you'll come to Mardu Farm on either side of the lane where there is a right turn and a white cottage on the corner in front of you. Carry straight on past this in the direction of 'Skelton's Bank' and after a further 300m the lane drops down a little where the brook goes under the road. Turn immediately right and after 30m right again and Offa's Pitch parking space is on your right and you have arrived.

N.B. If your Sat Nav takes you via Bishops Castle turn right off the A488 at Colebatch towards Cefn Einion. This is a narrow winding lane that will take you through the hamlet of Cefn Einion, keep going straight on at each junction even where it is staggered. Eventually you'll come down a narrow hill into the hamlet of Mardu do not turn left at the bottom but look for our Offa's Pitch Glamping sign on the signpost. Keep straight on 200m and Offa's Pitch parking bay is on the left and you have arrived.

Directions traveling West on the A456

There are many routes from the Midlands and Birmingham but from Kidderminster take the A456 towards Tenbury Wells. Just after passing The Wyre Forest Centre take the right turn onto the A4117 towards Cleobury Mortimer. Go through Cleobury Mortimer the road will take you over the top of Clee Hill from where there are outstanding views over the R. Teme valley and beyond. Down through Rocks Green and to the O turn right onto the A49 towards Craven Arms passing signs for Ludlow. In Craven Arms just after passing the Shropshire Hills Discovery Centre take the left turn at the O onto the B4368 signed to Clun. Carry straight on through Aston on Clun and Clunton until you reach Clun. In Clun at the T junction turn left down the hill towards and over the bridge. Turn right immediately after crossing the bridge towards Newcastle. After about 2 miles turn right where it's signed Whitcott Keysett and Mardu. At the T junction turn left and after 150m turn right in Whitcott Keysett where there is a house in the middle of the small junction. Carry straight on passing the old chapel on your right. After 1 mile you'll come to Mardu Farm on either side of the lane where there is a right turn and a white cottage on the corner in front of you. Follow our Offa's Pitch Glamping sign on the signpost and after a further 200m the lane drops down a little where the brook goes under the road. Turn immediately right and after 30m right again and Offa's Pitch parking space is on your right and you have arrived.

N.B. If your Sat Nav takes you via Bishops Castle turn right off the A488 at Colebatch towards Cefn Einion. This is a narrow winding lane that will take you through the hamlet of Cefn Einion, keep going straight on at each junction even where it is staggered. Eventually you'll come down a narrow hill into the hamlet of Mardu do not turn left at the bottom of the hill but keep going straight on (our sign is on the signpost). Offa's Pitch parking space is 200m on the left and you have arrived.

Contact Us:

Philip & Avril Wright

Mardu Cottage

Mardu

Clun

Craven Arms

Shropshire

SY7 8QG

07747 443322

07889 364408

Email: info@offaspitch.co.uk

Website: www.offaspitch.co.uk

